

Challenging situations

Adaptil™ Collar fitted to every dog entering a Dogs Trust and Blue Cross Centre

RESCUE / BOARDING KENNELS

The kennel environment can be stressful for you and your dog. Some dogs may show stress-related behaviour such as pacing or barking. Others may go off their food or develop diarrhoea.

Consider fitting an Adaptil™ Collar before the dog enters the kennel. This has been shown to prevent excessive barking and help dogs adjust more quickly to kennel life.

Dogs which have stayed in a kennel for a long time may require an additional Adaptil™ Collar to help them settle back into a new home.

TRAVEL FEARS

There are two aspects to travel problems; motion sickness and travel fear. However, the symptoms of each are very similar and many dogs are believed to suffer from both.

Reduce the stress associated with travelling by using an Adaptil™ Collar or Adaptil™ Spray. However, in some instances it may also be necessary to treat the motion sickness with medication.

FIREWORKS

Noise fears are very common, affecting up to 80% of dogs in the UK. In most cases dogs showing noise fears can usually be helped by providing Adaptil™ support and following a few simple steps. This should include building a den, drawing curtains, turning on the TV and most importantly acting normally and ignoring any fearful behaviour.

However, dogs developing, or in the grip of, a severe phobia will require a training programme of desensitisation and counter conditioning alongside Adaptil™.

For more information visit
www.soundsscary.com
and www.petfireworkfear.co.uk

As recommended by RSPCA

Adaptil™ is available in three easy to use formulations

Plug in Adaptil™ Diffuser

Releases the comforting pheromone into the local environment.

- Covers 50-70m²
- Each vial lasts up to 4 weeks
- Up to 5 refills may be used before replacing the diffuser unit



Adaptil™ Spray

Can be applied directly to objects or areas.

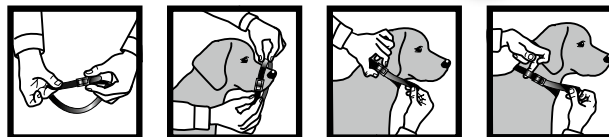
- Convenient formulation for intermittent use
- Gives temporary support when required
- Can be used alongside Adaptil™ Diffuser or Adaptil™ Collar



Adaptil™ Collar

Releases the comforting pheromone when fitted snugly and warmed by the dog's body temperature.

- Puppy / small dog collar fits necks up to 37.5 cm
- Medium/Large dog collar fits necks up to 62.5 cm
- Each collar lasts up to 4 weeks and can be replaced as required



Adaptil™ is not a veterinary medicine. If there are signs of disease, consult your veterinary surgeon.

133-0611-50K

For more information please contact:

Ceva Animal Health Ltd 90 The Broadway, Chesham, Bucks HP5 1EG
Tel: 01494 781510
www.ceva.co.uk

DAPI7



Because dogs get stressed too...



Adaptil™ - Managing stress throughout a dog's life

EARLY DAYS

Natural appeasing pheromones are released by the mother to comfort and reassure her puppies. This 'support' gives puppies enough confidence to explore and learn about the world around them.



SETTLING PUPPIES IN A NEW HOME

Bringing your new puppy home can be upsetting as it may be the first time it has been in a new place without its mother and siblings.

Installing an Adaptil™ Diffuser or fitting an Adaptil™ Collar will release the appeasing pheromone which will help your puppy cope better with this change.

As used by
Medical Detection
Dogs

As used by
Hearing Dogs
for the Deaf

SOCIALISATION (3-16 WEEKS)

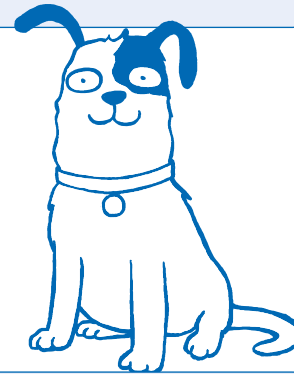
Puppies from 3-16 weeks of age are at their most sensitive and their perception of the world can be easily influenced by experiences had at this time. It is therefore important that these experiences are positive; If a puppy becomes scared or distressed by negative experiences it may develop anxiety-related behaviour disorders in later life (noise phobia, separation anxiety, fear aggression etc..)

Fitting an Adaptil™ Collar immediately following vaccination and wearing it throughout training can dramatically influence how well-behaved and confident the puppy will be.

ADOLESCENTS (18 MONTHS)

During this time, your dog may appear more nervous and reserved than usual and therefore require additional support when meeting new people or visiting new places.

Using an Adaptil™ Collar whilst outside or an Adaptil™ Diffuser in the home enables you to help your dog during this adolescent stage.



OLD AGE

As dogs become older, failure in eyesight or hearing can cause normally placid dogs to become easily stressed.

Owners may wish to use Adaptil™ to comfort and reassure older dogs, helping them cope with problems associated with ageing. In such cases, Adaptil™ may be used alongside traditional medications treating cognitive dysfunction, arthritis, organ failure etc..

What is Adaptil™?

Adaptil™, formerly known as DAP® is a natural, convenient and unique product for canine stress helping to comfort and reassure puppies and adult dogs by altering their perception of challenging situations and so preventing or reducing stress-related inappropriate behaviours.

When used during training and socialisation, **Adaptil™** helps promote learning and ensures puppies develop into well behaved and confident adult dogs.

- **Natural** - **Adaptil™** is a synthetic copy of the natural canine appeasing pheromone and is the natural way a bitch comforts her puppies.
- **Safe** - **Adaptil™** is designed especially for dogs, is odourless, non-sedative and can be used alongside all types of medication.
- **Scientifically Proven** - The effects of **Adaptil™** have been verified in 18 published trials (under the name of DAP®).

Puppies: **Adaptil™** helps puppies settle into new homes, promotes learning and dramatically reduces the likelihood of anxiety-related conditions developing in later life.

Adult dogs: **Adaptil™** helps dogs cope in kennels, during rehoming and in a range of other stressful situations such as during firework exposure.

- **Trusted** - **Adaptil™** has been used by behaviourists, veterinary experts and welfare charities for over 10 years.

www.dapfordogs.com

Follow Dap the dog on

twitter

@Dapthedog

facebook

Dap the dog

